



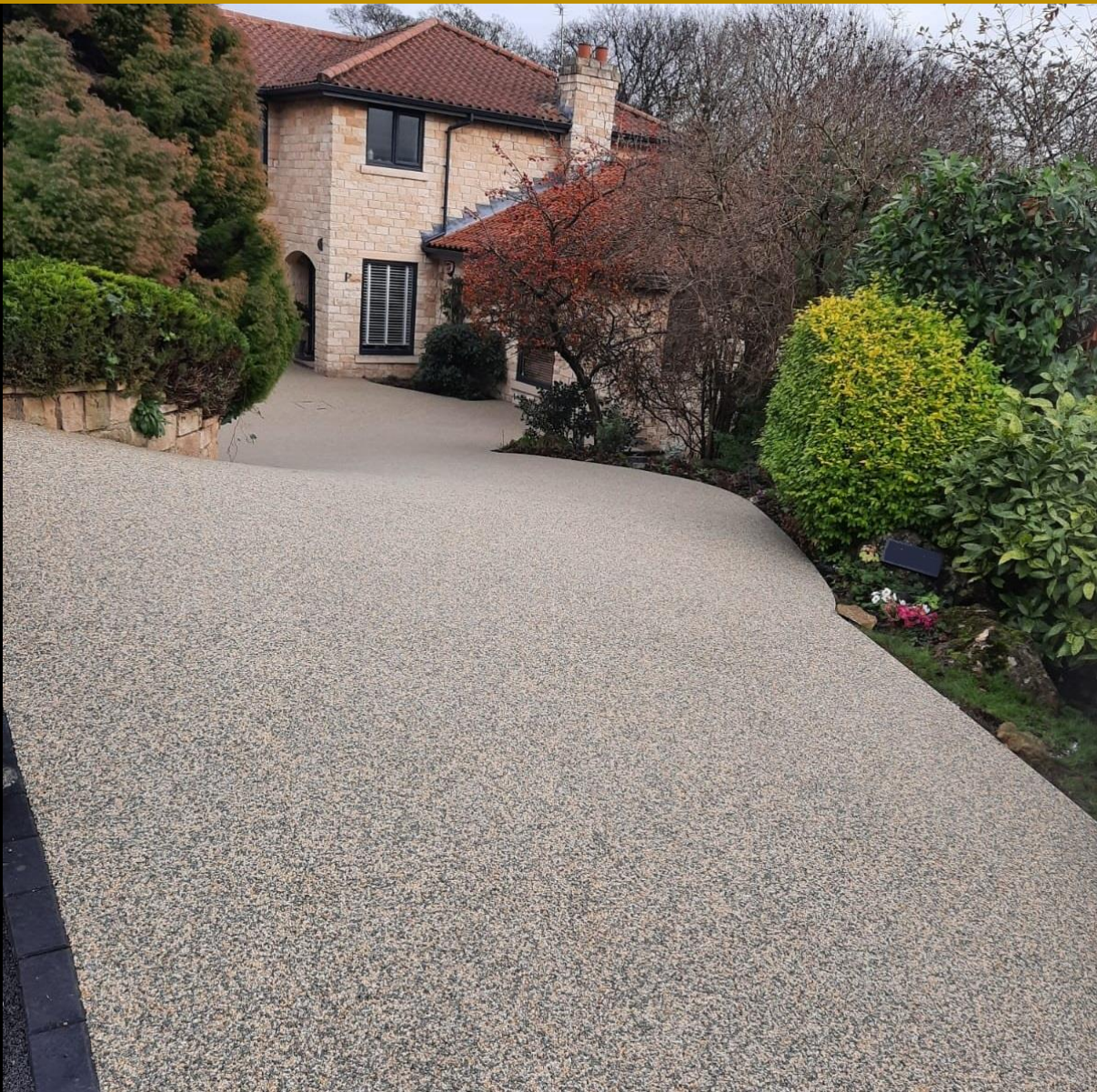
# Master Seal Solutions

**Installers of Premium Quality Resin Driveways,  
Patios & Walkways**

**TEL:** 01623 230822 / 01246 768400 / 01909 809044

**Email:** [sales@mastersealsolutions.com](mailto:sales@mastersealsolutions.com)

**Web:** [www.mastersealsolutions.com](http://www.mastersealsolutions.com)



Resin Bound Surfacing Brochure

## Contents

Introduction to Master Seal .....	3
Surfacing Options.....	3
Portfolio.....	4
Patios & Outdoor Seating Areas .....	4
Paths & Walkways .....	5
Driveways .....	6
Clean & Seal Services.....	8
Resin – Frequently Asked Questions (FAQs).....	8
Customer Reviews .....	11
Get in Touch with Master Seal .....	12

## Introduction to Master Seal

Master Seal Solutions are dedicated to bringing our customers the best quality Resin surfaces for their home or business property. We have a proven track record of delivering only the finest quality products. We specialize in the following:

- Driveways
- Patios and outdoor seating areas
- Paths and walkways

Our experienced surveyance team can help you to bring your project to life whether it is to improve the look of your home or you simply wish to take advantage of all the benefits that a Resin surface has to offer.

### Surfacing Options

We offer two main options for your surfacing project. These are:

- A full dig-out
- An Overlay

A full dig-out is required when your existing surface is not suitable for a Resin overlay. This can be due to several factors. Our surveyance team can explain in detail what is required for your property.

An overlay is our most popular product. This involves laying a resin surface over your existing driveway surface. If you have block-paving, concrete or tarmac, an overlay would be a great cost-effective option for you. Resin solutions are compliant with drainage regulations and so there would be no need for additional drainage installations.



## Portfolio

We are very proud of the work we have done for our customers. Here we have presented some of the finest examples of our work.

### Patios & Outdoor Seating Areas

Patios and outdoor seating areas are places of relaxation and enjoyment. By investing in Resin, you can spend more time doing the things you enjoy as this type of surface is easy to clean and maintain. Weeding is also not a problem unlike with block-paving.

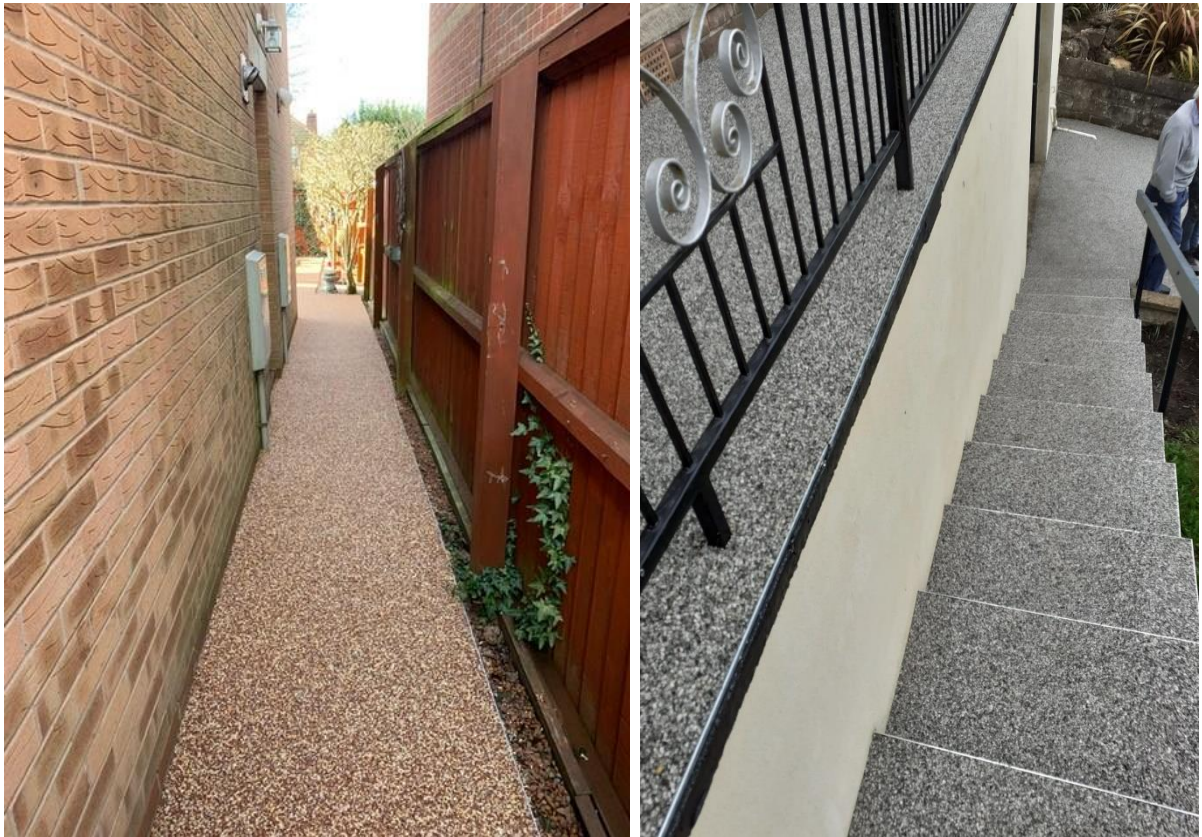


Resin is much more durable than other types of surface, and this makes it ideal for areas of your property that experience high footfall. Businesses such as pubs and restaurants are also increasingly investing in Resin for their beer gardens and terraces as the decreased maintenance costs and aesthetic appeal makes it an ideal option.

The surface is also anti-slip which helps to minimize the risk of accidents or injuries.

## Paths & Walkways

Paths and walkways see high footfall compared to other areas of your property. It therefore makes sense to invest in a solution that is easy to maintain whilst also being durable. A resin pathway can give you the attractive look you want without compromising on strength.



Properties come in a variety of styles and colours and it is important to select a Resin solution for your path or walkway that complements the era of your property. Our sales and surveyance teams can help you choose the ideal colour and style to suit your needs. Select from dozens of popular colours for a truly bespoke home improvement.

## Driveways

Your driveway is the gateway to your home. It is for that reason that it should look great, and what better way to achieve that than with a Resin Bound solution? Our driveways have received excellent reviews from customers, with their neighbours often wishing to invest themselves after seeing the results.



Driveways are our most popular product, although many customers also opt to have their pathways and patios resurfaced altogether to provide that consistent look around the property.



Unlike block-paving or concrete, Resin surfaces do not lose their colour over time due to sunlight exposure. To clean a Resin driveway, a simple sweep and washdown with a pressure washer is sufficient to bring it back to its former glory.

## Clean & Seal Services

Master Seal also offer Clean & Seal services. These are ideal for customers who already have either a Resin Bound surface installed or imprinted concrete. Our specialists can professionally restore your driveway, patio or path to its original condition. We also offer optional maintenance plans on all surfaces that we install to ensure you get the most out of your product.

## Resin – Frequently Asked Questions (FAQs)

Resin driveways are becoming more and more popular these days. But how do they work? Why should you buy one? Answers to all these questions and more can be found right here.



### What is Resin Bound?

Resin Bound driveways are made from a mixture of aggregate stones and resin and used to pave driveways, walkways and patios. They have seen a surge in popularity lately because of their pleasing appearance, strength and durability. This is our most popular product and we are proud to say we have achieved excellent results with it!

### Is Resin Better than other types of driveway?

We certainly believe so! Resin doesn't freeze in winter or get soft in the summer. It provides an anti-slip surface and facilitates natural drainage, meaning that unlike other types of driveway it doesn't puddle during heavy rain. It also has the distinct advantage over block paving when it comes to weed growth. You can wave goodbye to all those horrible weeds growing in between the bricks! By far the best thing about a Resin driveway is its attractiveness. We provide them in a range of beautiful

colours to suit your home's aesthetic. They will always stay looking good too as they don't discolour from exposure to sunlight and cleaning is quick and hassle free. As we tell all our customers, a Resin driveway is a no-brainer!



### **How much does a Resin driveway cost?**

This is a harder question to answer. There are many factors that affect the price of a Resin drive. If you already have a block-paved, concrete or tarmac driveway installed then an overlay is a good option available to you at a reasonable price. Some types of surface may require a full dig-out which is more expensive but will in turn increase the value of your property and give it a much more welcoming and stylish appearance. Our friendly surveyance team are always on hand to help you understand the work that is needed and what the best solution is for your property and budget.

### **I have block paving currently. Can I upgrade to a Resin Bound one?**

Yes! Whether you have tarmac, concrete or block-paving we can overlay your existing driveway with an attractive Resin solution. For other surfaces, our surveyance team can give you extra guidance.

### **My neighbour has just had a driveway done with imprinted concrete. It looks lovely. Why shouldn't I go with that instead?**

Although this type of driveway can look nice, it is still concrete at the end of the day. The material doesn't have the benefits that Resin has such as greater durability, drainage and anti-slip properties. Concrete also tends to crack over time but Resin does not.

### **We had a Resin driveway installed last year but it wasn't done correctly. Can you fix it?**

Yes, we can. Unfortunately, we see a lot of this happening and we always work with our customers to get the driveway done properly. Your home deserves the best, and we can provide it.

### **Do I need planning permission to get a Resin driveway installed?**

Generally speaking, you don't need planning permission for a Resin driveway. Resin driveways comply with drainage regulations and so are hassle free to install. However, if the job is more complex and includes lowering kerbs or similar modifications, our surveyance team can provide you with some extra guidance.

## Customer Reviews

Our customers are delighted with our work and we take great pride in bringing their homes back to life. Here are just some of our appraisals.

★★★★★

### Kevin G Barefoot

*"I'm incredibly happy with the work completed by the guys at Master Seal. Richard and Craig paid interest in the work to ensure we were happy and communication throughout was first class. The lads that laid the drive genuinely wanted to do a job that they were proud of ..."*

★★★★★

### Ricky Turner

*"Master Seal Solutions have just completed our driveway. Absolutely Fantastic end product. Work was carried out in only 3 days. All members of the team from Top man to the Dude on the sweeping brush were amazing. Very professional, very polite and very efficient Would definitely recommend this team to call if you're looking to transform your home. Thanks again to Richard, Craig and the lads for all your hard work. BOOOOOM !!!"*



★★★★★

### Judy Openshaw

*"They were very quick and cleaned up after themselves. They worked brilliantly as a team and it was fascinating to watch them work. The workers were polite and helpful and answered all our questions. The result was worth waiting for a lovely new drive that all the neighbours have admired and it has obviously put the price of my property up. Well done a good job Master Seal Solutions."*

## Get in Touch with Master Seal

Once you have decided to move forward with your Resin surfacing project, feel free to get in touch with us to discuss the next steps.

**Email:**

[sales@mastersealsolutions.com](mailto:sales@mastersealsolutions.com)

**Web:**

[www.mastersealsolutions.com](http://www.mastersealsolutions.com)

**Phone:**

01623 230822 / 07540 801171

**Facebook:**



@mastersealsolutions

Master Seal Solutions Ltd. is registered with Companies House (No.12771526) and is VAT registered (No. 359463462).

